

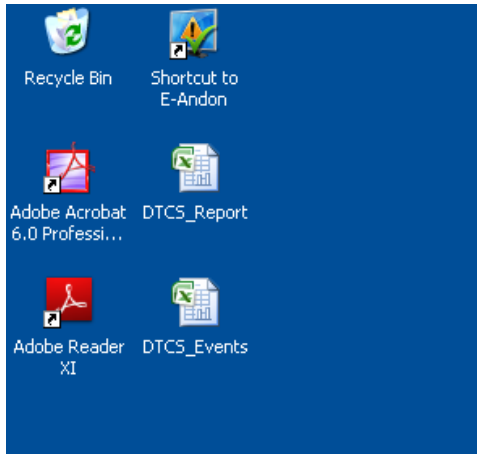


Andon System Software Quick Start Guide

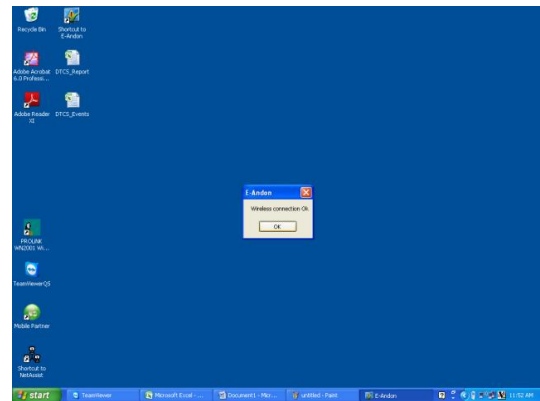
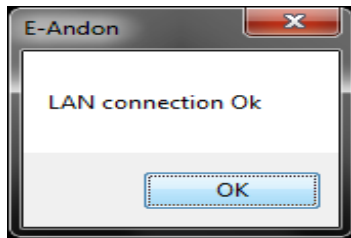
(DTCS-1432A)



1. Double Click on “E-Andon” shortcut icon.

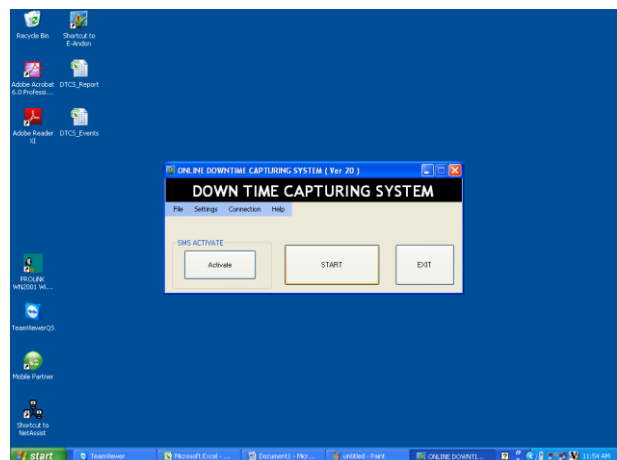
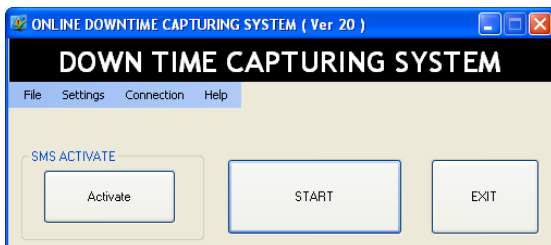


2. Then, it will appear “LAN Connection Ok” or “Wireless Connection Ok” message. Click on “OK” Button

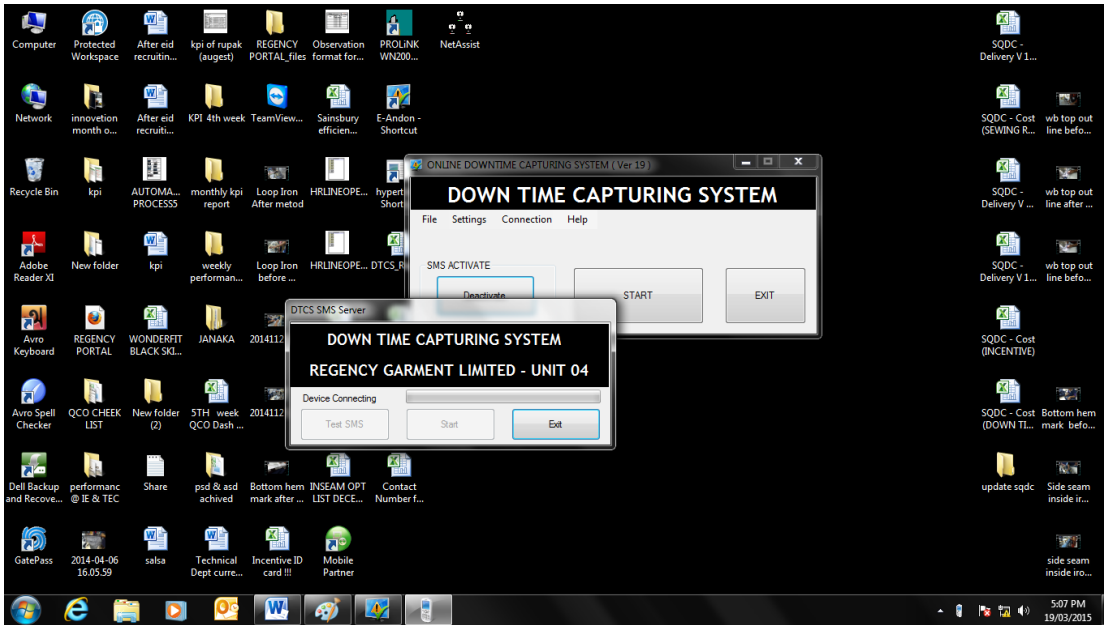


3. Downtime Capturing System Software will appear as following screen.

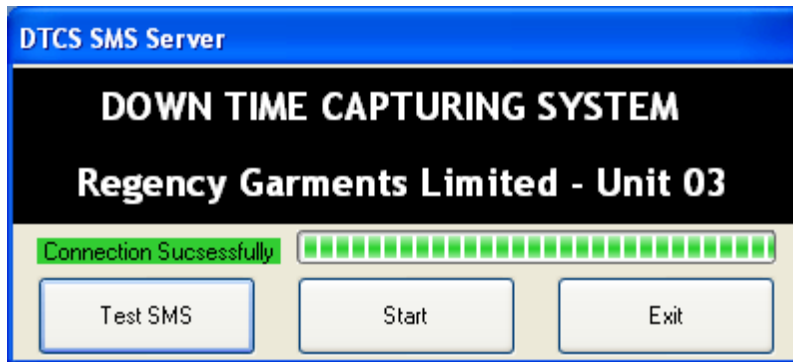
Click on “Activate” Button to start SMS server software.



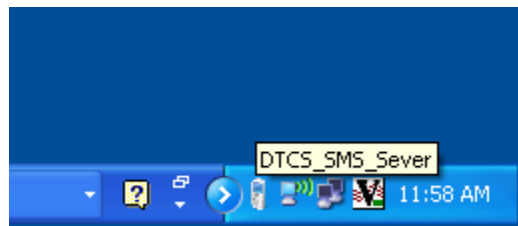
4. Please wait until “Device Connection Successfully” message appear on SMS server software



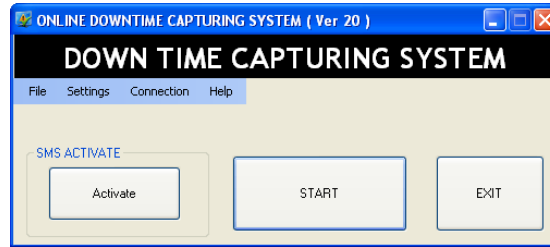
5. Now, click on “Start” Button.



6. Then, the SMS server software will be minimized to Notification area as following picture.



7. Click on “Start” button to start Downtime Capturing System software.



8. Please see whether fill all cells after few seconds.



9. Now, you have successfully started the Downtime Capturing system.

